

# CURRENT HAPPENINGS

## Forty-seven make straight "A"s

A total of 47 UMSL students achieved a perfect 4.0 grade average for the 1967 winter semester. The 47 day and evening college scholars were part of a group of 436 students named to the Dean's List. To be included on the scholastic listing, a student must carry a minimum of nine hours and attain a 3.2 or "B" average for the semester.

## Night at Ball Park

The Student Association and the University Athletic Department are co-sponsoring a "Night at the Ball Park" on September 22. The Cardinals will play the Atlanta Braves.

All orders had to be placed two weeks prior to the game.

## Angel Flight Hosts Picnic

Members of UMSL's Angel Flight, in cooperation with other Angel Flight members from St. Louis and Washington University, hosted a picnic, Sunday, August 20, for over 200 Air Force ROTC cadets in summer training at Scott Air Force Base. The picnic was held at Grand Marais State Park near East St. Louis, Illinois.

Miss Andrea Dorriere, a senior at UMSL and former commander of its Angel Flight, was picnic chairman.

## Guitar Course Returns

"Folk Guitar," a telecourse in beginning guitar taught by TV teacher Laura Weber will return to KETC, Channel 9, on September 18 at 10 p.m. Mondays and 5:45 p.m. on Thursdays.

## British Painting Featured

City Art Museum's exhibition of British Watercolors 1750-1850 will be on display through Sunday, September 17. Admission to the exhibition is free and open to the public.

## Alumni Assoc. Elects Officers

Members of UMSL's first graduating class initiated the University of Missouri at St. Louis Alumni Association early this August, appointing Lois Brockmeier acting executive secretary of alumni activities.

Jack Sieber was elected president at the association's first meeting. Other officers are: Bill Ebbinghaus, vice-president; Rose Ann Emma, secretary; and Ted Melton, treasurer. The 177 graduates who received degrees as members of the University's first graduating class in June and the 50 who received degrees in August will form the basis for the new alumni association.

## Student Increase at Summer School

Approximately 3608 students attended summer session classes at the University of Missouri at St. Louis this year. Of this total, 1652 enrolled in Evening College courses, 1503 in Day Division courses and 453 students took graduate courses under a cooperative program with the University of Missouri at Columbia.

Summer session enrollment showed an increase of 15.3 per cent or 475 students, over 1966. Students attended classes in the College of Arts and Sciences, the School of Education, and the Division of Business Administration.



# CURRENT

VOLUME 2, NUMBER 2

UNIVERSITY OF MISSOURI AT ST. LOUIS

SEPTEMBER 8, 1967



Orientation Committee Co-chairman, Holly Ross and Pat Soltys, have been working on the 1967 orientation of freshmen and transfer students.

## Orientation Planned For 1700 Students

About 1700 incoming freshmen and transfer students will be the center of attention during the annual UMSL orientation to be held on campus, September 8 - 15. Transfer students will receive orientation September 13, with the remainder of the week devoted to freshmen.

Orientation is being handled by Student Affairs Office and the Orientation Committee of the Student Association. Holly Ross and Pat Soltys are co-chairmen of the committee.

Freshman Orientation will be divided into two-day sessions for three groups of freshmen. First day events will include viewing the movie "Citizen Kane," a panel discussion of the movie with Dr. William Hamlin, Dr. Charles Armbruster, Dr. Robert Sullivan and Dr. Neal Prim, and discussion of the required reading book, John Steinbeck's *East of Eden*. Students may tour the campus during the mid-day break and attend an afternoon reception in the Student Lounge in Benton Hall.

### Second Day Events

Events which the freshmen will participate in during the second day of their orientation include

discussion session on "How to Succeed in College" led by student leaders, campus tours, the Chancellor's address and a pool and patio party.

Orientation of transfer students will take place on one day, September 13, and will feature speeches from Chancellor Bugg, S.A. President Michael Hughes and Dean Eickhoff or Dean Davenport, with question and answer periods following.

Campus organizations will set up booths on the patio behind the administration building to acquaint incoming students with their club's purposes and events.

Directing orientation events are these members of the orientation committee: Holly Ross, Pat Soltys, Debbie Loyear, Julie Reid, Phyllis Brandt, Don Piche, and Donna Fisher. Members of Angel Flight will also help in this week's events.

## S.A. Meeting To Feature Seminars

By Mary Collier

Seminars and discussion groups will highlight the Student Association meeting on September 13 at 7 p.m. Sessions will be held on the duties and functions of the Chief Executive Officers, the Secretariat, fiscal matters, parliamentary procedures, community involvement, international affairs and student government.

The meeting will be the first of monthly meetings to keep students informed of Student Association activities and to provide seminars in areas of concern to students. There is no charge for the seminars which are designed to be of use to club leaders and members of the Student Association.

Goals and programs of the Student Association for the coming year will be announced in the first section of the meeting. A brief report will be given on all aspects of the Student Association and government of the University.

### Seminar Areas

S.A. President Michael Hughes will lead the seminar on the duties and functions of the Chief Executive Officer. This seminar will acquaint the presidents of all campus organizations with their special leadership role and how to fill that role effectively.

A seminar on the Secretariat: its function will be led by Lois Brockmeier, Past Secretary of the Chancellor's Advisory Council. This session will acquaint fiscal officers with their duties and functions, the campus fiscal procedures, budgeting, and general financial matters.

Mary Killenberg, a Senior Sena-

tor, will head the seminar participants in correct parliamentary procedure in order to help students in getting through the meeting efficiently.

### Three Other Seminars to be Held

The seminar on Community Involvement is designed to involve the students in the community welfare work, including tutorial projects and other related concerns, and civil rights participation. Gary Lewis, Community Involvement Committee Chairman, will lead this session.

Toni Illagan, International Affairs Committee Chairman, will head the session on International Affairs designed to encourage students involvement in International Affairs; to find out how they can become involved; and to set up a program of international concern.

### Seminar On Government

A seventh seminar will be on Student Government and will be directed by Rod MacDonald, Student Association Vice President. There will be discussion on the structure and purpose of student government on our campus and discussion of means to increase active participation in campus government.

## UMSL In Building Boom

by Rich Dagger, News Editor

Construction will boom on UMSL's campus this year as work continues on two structures, the Mathematics and Modern Languages Building and the library, and begins on two more. In addition, construction is scheduled to start on the University Center complex early in 1968 as the University's building program gains momentum.

The five-story Math and Modern Languages Building, located between the student parking lots and the Administration Building, is slated for completion this April. Work on the neighboring library should be concluded this May. After these buildings are painted and furnished, they will be "put to immediate use, perhaps in time for the 1968 summer session," UMSL Business Manager John Perry told the Current.

Another major project was initiated September 5 when workmen began grading the area between Benton Hall and the campus drive, future site of the Life Sciences Building. The five-story brick and concrete edifice will house the Departments of Biology and Psychology, and, temporarily, the Department of Physics. Plans include offices, classrooms, animal quarters, a greenhouse and a penthouse laboratory. Completion of the \$3,000,000 structure is set for early 1969.

### Center For Student Activities

Designs for the University Center complex are in the final stages now, with the transition from drawing board to reality expected to begin shortly after the first of next year. The four-story University Center, to be located northeast of the Country Club Building, will incorporate facilities for dining and student activities. A dining room and a snack bar, each seating 500, will be provided, as well as a student lounge, meeting rooms and space for an expanded bookstore. Offices for the Center's director, the Dean of Student Affairs and the Student Association will also be included.

The J.C. Penney Educational Building will form the second half of the University Center complex. Linked with the Center by a closed corridor, it will quarter the Education Department and the University's Extension Division.

(Con't. on Page 3)



UMSL CURRENT is the official student publication of the University of Missouri at St. Louis. It is funded through the Student Activities Fee. The Current office is located in the University Administration Building, Room 207, 8001 Natural Bridge Road. Advertising and subscription rates given on request.

Editorial Staff

- Editor ..... Mary Collier
- Managing Editor ..... Barbara Duepner
- News Editor ..... Richard Dagger
- Editorial Editor ..... Duane McIlquham
- Features Editor ..... Sam Hack

Staff

Mike Baumer, Linda Collier, Bob Fick, Ken Knarr, Susan Langford, Linda Lindsey, Pamela Nauman, Doug Sutton, Philip Wells.

Photographers ..... Jim Rentz, Michael Devereux, Luthor Oliver.

**Editorials**

In this special orientation issue of the UMSL Current the staff would like to welcome all freshmen and transfer students coming to our campus. We hope that they will find the challenge and interest here that makes college a major goal for many high school graduates.

A basis for interest in college, we believe, can be found in active participation in college events. There are many campus activities at UMSL that are worth joining. Some of these are social clubs while others are service organizations or groups that produce or publish.

Throughout the school year the UMSL Current will keep the students and faculty posted on what is happening in the clubs and organizations and departments on campus.

Any interested student is invited to join our staff and the Current generation.

**An Expanding University**

Welcome to the University of Missouri at St. Louis. A school with a big part to play in the future. A school that is constantly on the move. A vibrant and friendly school, rapidly expanding to meet the ever increasing needs of tomorrow.

The University of Missouri at St. Louis offers the student all the advantages of a large school. We have a wide range of courses which are recognized by all schools to be of top notch quality. We have one of the finest faculties ever assembled in a new university. We also have a variety of social activities ranging from mixers and parties to top name celebrities.

UMSL, since it isn't a large school, also offers you all the advantages of attending a small school. You will find a small school friendliness in a large school atmosphere. You'll have a chance to meet many exciting people and make new friends. The small classes will afford you the opportunity to get acquainted with your teacher.

Great emphasis is placed on the student here at UMSL. The Student Association, an organization created to give students a voice in the administration of their school, has the enormous task of assimilating the students into the process of the university. The faculty and the administration go out of their way to make themselves available to students. Everyone is deeply concerned that the student who attends UMSL feels that he or she is an important part of this school.

However, we are not without our problems. The enrollment is increasing faster than adequate buildings can be erected. Consequently we lack the space to comfortably house all the students presently attending the university.

Another sore spot is our parking situation. Being a commuter campus, we have the additional task of providing ample parking facilities for those students desiring to drive. Needless to say, this is our greatest problem. If everyone cooperates, it will not alleviate the problem, but it might make it easier to live with.

It's up to each individual to become an active member of this school. You'll never enjoy your college years unless you become active. So join in, become a part of us. Help us to overcome our problems and we'll help you overcome yours. Working together we can make the University of Missouri at St. Louis the number one school in the state.

**APO Fraternity Sponsors Book Pool**

Alpha Phi Omega's Book Pool is returning to campus this fall. They began accepting books September 6 with actual sales beginning on September 8 in room 210.

The schedule for the book pool is:

- Sept. 8-9--selling and accepting books from 9 a.m.-3 p.m.
- Sept. 11-15--selling and accepting books from 9 a.m.-3 p.m.
- Sept. 18-22--selling and accepting books from 9 a.m.-3 p.m. and 6 to 9 p.m.
- Sept. 25-28--books and/or money will be returned 9 a.m.-3 p.m.

Students will set the prices for their own books. A fee of 10¢ will be charged for each book pool entry form. The form can be used for 10 books.

When a book is purchased 5% of the purchase price will be added to the selling price. Money collected by APO in the Book Pool will go in the APO Scholarship Fund.

Members of this service fraternity worked late into the night, Thursday, August 31, in addressing leaflets announcing the book pool.

**Hughes Urges Participation**

On behalf of the Student Association, I would like to welcome you to the St. Louis campus of the University of Missouri. You are fortunate in that you are now a part of a growing institution. As such you should welcome the opportunity to participate in the development of UMSL's purpose and philosophy.

In addition to your academic activities, there will be a number of opportunities to participate and build a new type of student government, one which is relevant to the commuter campus. The success of our student government will be correlative to the amount of interest and energy each student puts into his government.

The purpose of student government is to govern and serve the students on this campus. The Senate, which is the legislative body of student government, is interested in the welfare of the entire student body. Your opinions on any matter should be made known to your Senator, who will in turn, present the views of the students he represents to the Senate. Elections for Freshman Class Officers and Senators will be held later this month; you are encouraged to run for office and represent your fellow students. If you are interested, you should contact me as soon as possible.

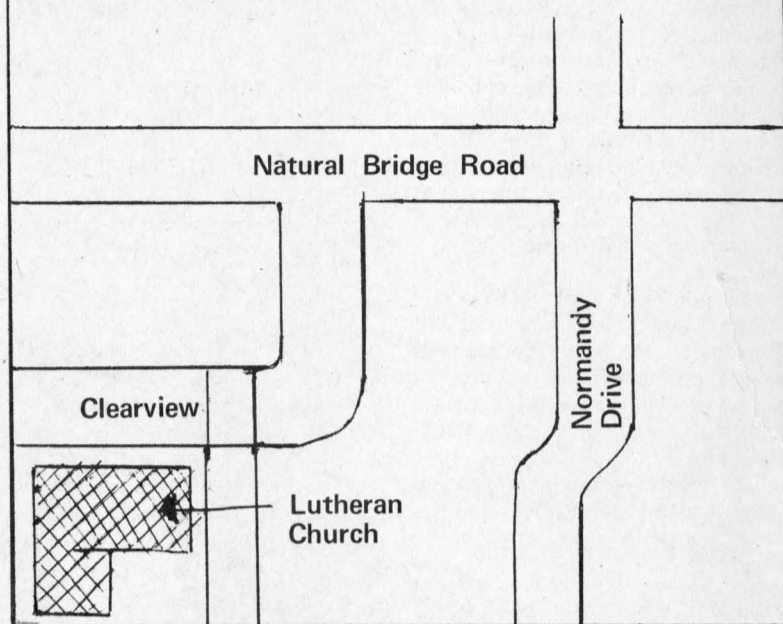
You are also encouraged to attend the weekly Senate meetings to see how your government actually works.

I will be happy to discuss student government opportunities with you at any time. My office is in Room 210, Administration Building. The best time to see me would be on Tuesday or Thursday afternoons.

I will look forward to meeting you during the year. Again, welcome to the UMSL Campus. I hope your experience at the University will benefit you, and that you will directly benefit the University.

Michael Hughes, President  
UMSL Student Association

University of Missouri at St. Louis



**Large Enrollment Forces Expansion**

More than 5,000 students will attend Day Division classes at UMSL this fall, increasing the strain on the University's already overburdened physical plant and causing the University to launch an emergency expansion program this summer. The admission of some 1700 freshmen forced UMSL officials to build two small buildings, buy a house, rent rooms in a church and add more parking space.

Six classrooms were rented from the Unity Lutheran Church in Bel-Nor (see map). Many of the University's language classes will meet here.

The School of Education will be housed in the Casey home. Located at the corner of Natural Bridge and Normandie Drive, the home was purchased last summer.

Administrative offices will be moved from the Country Club Building to a metal office building now under construction near the Florissant Road entrance this January. Until then, the wooden building above the lake will be used for faculty offices. Then, in January, faculty offices will move into the Country Club Building, and the

wooden structure will become a study hall.

Construction of the Life Sciences Building will close the faculty parking lot along the campus drive. To make up for this loss, the lower parking lot along the east edge of the campus will be converted into a faculty lot during the day; at night, it will contain half-faculty, half-student parking. Faculty will also park on the shoulder of the drive leading from Benton Hall to Natural Bridge.

Two new student parking lots will be built toward the rear of the campus, between the Math and Languages Building and the intramural field. There will be space for about 350 cars here.

**UMSL CURRENT NEEDS**

**Business Manager,  
Advertising Manager,  
Reporters, Ad Men,  
And Photographers.**

**Sign Up At The Orientation Booth,  
Or Come To Room 207, Adm. Bldg.**

## Faculty Gains Size and Quality

Nearly 100 new faculty members will join UMSL's staff this fall, bringing the number of instructors here to more than 340. A great many of these new teachers have proven themselves to be outstanding scholars, and, in order to recognize their achievements, the Current will present department by department sketches of new faculty through the next few issues.

Five doctors and a doctoral candidate will begin teaching in UMSL's science department this fall. Two of them are biologists, two are chemists and two are physicists.

Dr. Frank Moyer, who will become professor of biology, is renowned for his use of the electron microscope in the analysis of gene action on the level of cell ultrastructure. He has done important research in understanding the way genes act to create ultra cellular pigment granules which are responsible for coat color in mammals.

Dr. Moyer earned his Ph.D. in Biology from Johns Hopkins University in 1961 and is currently associate professor of biology at Washington University. He has authored more than 25 articles published in professional journals.

### New Physics Chairman

UMSL's new chairman of the physics department, Dr. William Eidson, is presently directing research programs at six different laboratories. Among these are the Argonne National Laboratory, NASA's newest research center, and Oak Ridge National Laboratory. Dr. Eidson's primary field is experimental nuclear physics, but he has also conducted research in solid state and atomic physics.

Dr. Eidson is an associate professor of physics at Indiana University and is co-author of the Indiana physics department's entire curriculum. He received his Ph.D. from Indiana University in 1961, and has written more than 25 articles for professional journals.

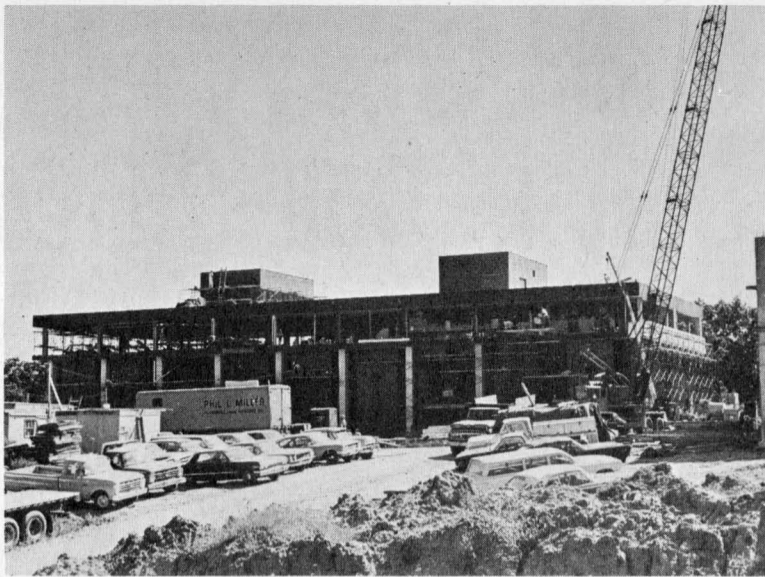
Another physicist from the University of Indiana, Dr. Cornelius Eftimiou, will join UMSL's staff this fall. Dr. Eftimiou, visiting professor at Indiana, has taught at the University of Bucharest, the University of Bonn, West Germany, and was chief of research at the Institute of Physics in Bucharest. He is a 1963 Ph.D. graduate of the University of Bucharest.

Dr. Ronald MacLeod, formerly of Western Reserve University, will be an assistant professor of Biology. Dr. MacLeod, who spent six months at the University of Tübingen, Germany as a NATO Research Scholar during his graduate study, received his Ph.D. from the University of St. Andrews in Scotland in 1963.

### Phi Beta Kappa

A Phi Beta Kappa, Dr. Eric Block, will assume an assistant professor's post in the Department of Physics. Dr. Block is a 1967 Ph.D. graduate of Harvard University.

Dennis Diestler, a Ph.D. candidate from the California Institute of Technology, will be an assistant professor of chemistry. A former Woodrow Wilson Fellow, he now holds a National Science Foundation Predoctoral Fellowship at California Institute of Technology.



The Math and Modern Languages Building is due for completion this April.

Photo by Jim Rentz

## Building Program Accelerates

(Con't. from Page 1)

Total cost of the University Center and the J.C. Penney Building is projected at more than \$4,000,000. The center will be paid for by the issuance of bonds financed by student union fees, and the Penney Building will be constructed partially with the receipts from the rental of the UMSL owned J.C. Penney warehouse in St. Louis. Federal funds will also be used. The Leo A. Daly architectural firm is designing the complex.

### Athletic Facilities Planned

Two more large structures are currently in the preliminary planning stage. In its last session the Missouri Legislature appropriated money for a Multi-purpose building and a Social Sciences-Business Education unit. The University has applied for a United States grant and will proceed when it is approved.

When completed, the dual-level Multi-purpose Building will be home to both the physical education and music departments. It will contain bleacher seating for 6040 around the second floor basketball court, a 42 X 75 foot swimming pool, four classrooms, music rooms and administrative and faculty offices. Facilities for wrestling, conditioning and handball will also be included. This unit will be situated at the northern end of the campus, near the intramural field. The firm of Kenneth E. Wischmeyer and Partners is preparing drawings for the \$3,000,000 structure.

### Office Tower, Part of Complex

Plans for the Social Sciences-Business Education complex feature a 12-story office tower connected to a four-story classroom and lecture hall building. Murphy and Mackey, architects of the library, are working on this unique design. The structure will be erected northwest of the Administration Building, opposite and parallel to the Math and Languages Building, and will be part of the quadrangle. Construction of the Social Sciences-Business Education complex will cost approximately \$4,200,000.

Architects Hellmuth, Obata and Kassabaum, designers of Benton Hall, have provided for a 300-seat lecture hall, two language laboratories, 82 faculty offices and a statistics laboratory in the Math and Modern Languages Building. There will also be classrooms, seminar rooms and a study area.

The library, now going up behind the swimming pool, will con-

tain seating for more than 1,000 persons and shelf space for 240,800 volumes. Designs by Murphy and Mackey specify three floors above ground and two more beneath. Provisions have also been made for a five story upward extension.

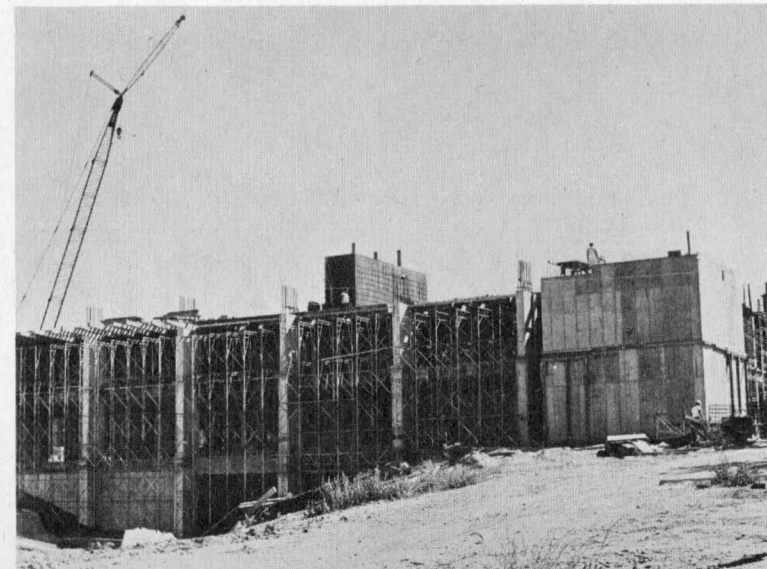
These two buildings mark the beginning of a quadrangular formation of classroom buildings which will also include the Social Sciences-Business Education complex. Combined cost of the Math and Languages unit and the library is \$4,050,000.

## T.V. Series to Help Drivers

"Auto Mechanics," a new series presented to aid drivers in the understanding and care of their automobiles, will premiere on KETC, Channel 9, on September 12 at 8:30 p.m. Tuesdays and will be repeated at 4:45 p.m. Wednesdays.

Hosted by Mr. Richard E. Pinette, each of the ten programs deals with the operation of different systems in the automobile--i.e. the Engine Ignition System, the Fuel System, the Cooling System, the Brake System, and the Engine Lubrication System. The instruction in the operation of these various auto units is accompanied by actual demonstrations. Also, drivers are shown how to make minor repairs and how to detect excessive wear of the automobile parts.

The telecourse outline and viewer's kit for this series may be obtained by writing to: The Registrar, KETC, 6996 Millbrook Blvd., St. Louis, Missouri, 63130.



UMSL's new library will probably be finished by May, in time for the summer session.

Photo by Jim Rentz

## SA President Outlines Objectives and Changes

by Doug Sutton

Students at UMSL can expect a dynamic Student Association this year. That's the opinion of Michael Hughes, SA's President, who stated that charges of "apathy" should have been aimed at past Student Association administrations, not at the students of the University.

In an interview, Hughes told the Current, "In the past, SA has not represented the students, nor has it met the needs of the students. Instead, it has made for itself a reputation of being a close-knit, self-perpetuating organization. This year we plan to take major steps to make the SA take a more active role in the students' affairs."

Hughes said that the SA plans a major revision of its own constitution. "This is probably the biggest step towards making SA more effective," he explained. "As it is set up now, the SA senate is still based on class representation. The biggest drawback to this system is that the students do not know who to talk to if they have a problem or recommendation to put before the Senate."

"Other commuter schools like ours use a system which I feel is more desirable: having the Senate composed of delegates representing the divisions of the University; the representatives would be students majoring in a particular area of study, elected by others majoring in the same area."

"For example, history majors would elect a representative or representatives also majoring in history. Under this system, if a student should wish to make his opinion felt, he would know where to go and who to talk to."

### Revision Will Take Time

Hughes said that the job of revising the constitution will be lengthy, taking several months. Already, the Committee for Constitutional Revision, headed by SA vice-president Rod MacDonald, is planning to hold hearings. Hughes urged students to attend the hearings and make their views known. The new constitution, subject to Chancellor Bugg's approval, would go into effect next spring.

Another objective of this year's SA is to draft a basic statement of the student's rights and responsibilities--"And the emphasis is on 'responsibilities,'" Hughes pointed out. He said "The two major responsibilities a student has at UMSL are to learn, and to

behave in a way that would not bring undue publicity to the school."

Hughes stated that a committee comprised of four students and three faculty members will author the statement, which must prove acceptable to both students and faculty. He feels that such a statement may prevent the development of a situation like that at the University of California at Berkeley, where students were ignorant of their rights.

### Course Evaluation Underway

Two other projects which SA will work on this year will be a questionnaire and a course evaluation report. The questionnaire will probe student opinion on urban problems, civil rights, the draft, the Vietnam war and problems concerning UMSL. The course evaluation will offer a critical examination of the courses offered at UMSL.

At a meeting on August 28, the SA Senate also voted in favor of joining the United States National Student Association. The vote came on a proposal by President Hughes, who had just returned from a two-week stay at the University of Maryland, host of the NSA's Twentieth National Student Congress. Hughes was a non-member observer.

After the Senate's approval, Hughes remarked, "The National Student Association is prepared to offer us assistance and service as a student government and to each student at UMSL."

### Advantages of Membership

"There are a number of areas where NSA can serve the individual student on our campus: 1) There is a program of domestic and foreign discounts which are available to our students while traveling or visiting; 2) while traveling in this country or abroad students are also given special lodging rates at 300 college dormitories and 200 hotels, including five leading hotel chains; 3) Through Educational Travel, Inc., a division of NSA, students can use a number of programs to travel, work or study abroad; 4) The NSA also offers individual life insurance policies to students attending member schools. This is a \$10,000 policy with a premium of only \$20 a year.

Among other advantages Hughes cited is an information service which can supply a member school with information from a lending library of over 400 topics. Hughes also noted that NSA belongs to the American Council of Education, as well as maintaining working relations with student unions from foreign nations.

## August Graduates

Fifty Students joined UMSL's first graduating class when they received degrees Thursday, August 24. No formal graduation ceremony was held.

The College of Arts and Sciences graduated 17 students, 22 were awarded degrees from the School of Education and 11 completed undergraduate work in the school of Business Administration.

## Transfers Boost Hopes For '67-'68 Hardcourt Season

Seven transfer students are expected to bolster Head Coach Chuck Smith's University of Missouri at St. Louis basketball squad for the 1967-68 season.

Topping the list of transfers are brothers Chuck and William Caldwell, who both played last year for Southwest Baptist College. Chuck, 6 foot 2, was the leading scorer on last year's Southwest team, averaging 17 points per game. He has already been scouted by the professional teams and is considered an excellent prospect.

Chuck's younger brother, William, is 6-foot-4 and has played varsity basketball at Southwest Baptist for two years. Both brothers carry a B or better average and decided to transfer to UMSL to enter the School of Business Administration.

Louis Becton, 6-foot-5, who played high school basketball at Beaumont and was all state his senior year in 1966, will be counted on to man a forward post on the Rivermen squad. Becton averaged 13 points and 10 rebounds a game last season for Western Wyoming Junior College.

Transferring from St. Mary of the Plains College, Kansas, will be 6-foot-5 Dennis Whelan, who played high school ball at Dubourg here. Whelan played both center and forward for the Kansas college last season.

Bob Wachter, 6-foot transfer from Meramec Junior College, is expected to add backcourt depth to the UMSL team. Wachter played high school ball at Maplewood.

Another transfer from Western Wyoming Junior College, Joe Young, is expected to add scoring power and rebounding strength to the UMSL five. Young, 6-foot-3, averaged 14 points and 10 rebounds a game for the Wyoming college last season. He played high school basketball at Sumner.

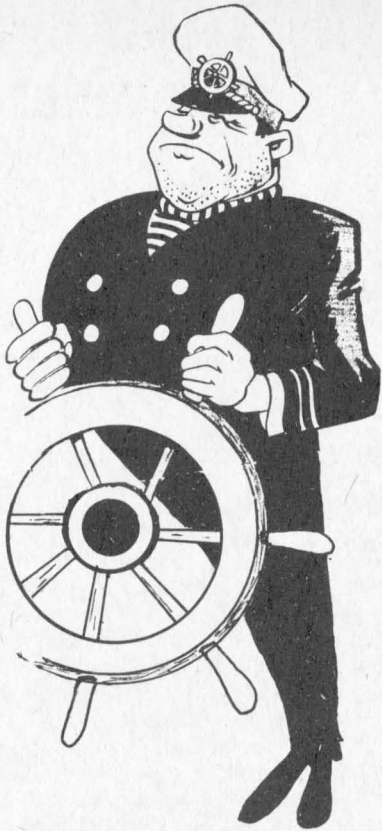
William McBride, an all-Suburban Big Tenselection when playing for Ladue, also enrolled at UMSL this summer. McBride is a six foot guard who set a school record at Centenary College of Shreveport, Louisiana last year with his 91 per cent accuracy from the foul line. He also earned a spot on the Gulf-South Classic all-tournament team.

The seven transfer students, along with seven returning lettermen, are expected to form a solid nucleus for Coach Smith's 1967-68 Rivermen squad.

## Catalogue Library In S.A. Office

A library of catalogues from American colleges and universities has been initiated in the office of Student Association President Michael Hughes. The library will also contain other student-oriented literature and will be available to all students and faculty.

Any student or member of the faculty who has catalogues or non-academic literature of interest to students may donate them, if they wish, to this new library.



## Traffic Regulation Change Reminder

The Security Department headed by Chief Nelson wishes to remind students of the changes in traffic regulations made by the Board of Curators dealing with transferring and counterfeiting parking permits here.

For transferring a Registration Certificate or Parking Permit to another motor vehicle for which it was not issued a fee of \$5 will be charged for first violation; for a second violation a fee of \$10; for a third violation in addition to the monetary fee assessed, a student may be referred to the Committee on Student Affairs for additional disciplinary action.

For counterfeiting, altering, defacing a Registration Certificate or Parking Permit or displaying a counterfeit, altered, or defaced Registration Certificate or Parking Permit a fee of double the full time semester parking fee will be assessed and the violator referred to the Committee on Student Affairs for additional disciplinary action.

## ALPHA PHI OMEGA RUSH WEEK SEPTEMBER 8-21

Are you interested in a fraternity with a purpose?

1. Service Projects
2. Academic Programs
3. Social Activities

If your answer is yes, see us at our booth on the patio.

## FRESHMAN MIXER SEPT. 16 CASUAL DANCE PATIO, 8-12 P.M.

# Grand Prix Visually Exciting Despite Dull Stereotype Plot

by Sam Hack, Features Editor

Motion picture director, John Frankenheimer, who has been responsible for such fine films as Birdman of Alcatraz, The Manchurian Candidate, and Seven Days in May, took a film crew of more than two hundred people, including a talented international cast to Europe to follow the Grand Prix world championship motor racing circuit. The result was a visually exciting Cinerama feature about this world of speed appropriately titled Grand Prix, which is currently showing at the Martin Cinerama.

Frankenheimer, his director of photography--Lionel Linden, and his sound recording engineer--Franklin Milton--have come up with many scenes, which, with the help of the Cinerama process, give the viewer the sensation of being in the cars on the track moving at speeds in excess of one hundred-fifty miles per hour. These thrilling scenes plus some excellent acting make the film worth seeing.

### Cliche-Filled Plot

Robert Alan Arthur's screenplay attempts to explore the lives of the people involved in this fascinating sport, but succeeds only to remind us that there are people behind the cars. The reasons for this are a cliché-filled plot and a series of one dimensional characters. The plot deals with four drivers, portrayed by James Garner, Yves Montand, Brian Bedford, and Antonio Sabato; their attempts for the driver's world championship, and their problems with romance. Sabato plays the stereotype of all thrill-seeking youths, and Garner plays an American driver who is of little importance to the plot. He is obviously in the picture because he has an ideal combination of a star name and an unusually good knowledge of auto racing, a long-time hobby of his.

Bedford and Montand fare much better. Bedford is a young man who is fanatically trying to be a better driver than his older brother, a former world champion who was killed in a racing accident. His

fashion-model wife, played by Jessica Walter, leaves him because, although she loves him, she hates racing and cannot bear to watch him push himself on in spite of even crippling injuries. She, of course, returns to his side before it is all over after providing some love interest for James Garner. This situation is admittedly not much more original than those involving Garner and Sabato, but the superior acting of Bedford and Walter make something more interesting out of it.

This man's death in a racing crash is made the only moving moment in the film by the acting of Montand, whose performance made one care for him. Saint and Genevieve Page perform beautifully with Page as Montand's wife, a role that is all too small for her.

### Montand Brilliant

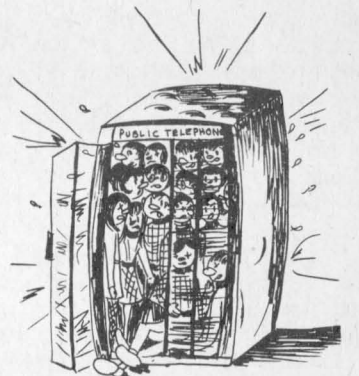
The only real flesh and blood character in the film is given to the wonderfully talented Frenchman, Yves Montand, and his performance is brilliant. He plays an aging driver recognized as one of the greatest of his day who is tired of racing. He is forced to continue by the industrialists who own him, one of whom is his wife. He falls in love with an American magazine writer, played by Eva Marie Saint, who also gives a strong performance. He, of course, can never be free to marry her.

# UPO

The University Placement Office is a place students should know about early in their academic careers. For those who need part time or holiday work UPO will help in finding jobs. For more information, please come to Room 117, Administration Building to register with the UPO.

(Editor's Note: Miss Vron Murphy is the Director of University Placement. Due to her office's efforts last year about 265 seniors were aided in finding positions in business, education and government agencies.)

Like to be one of 16 in a telephone booth?



Like to be one of 18 in a Volkswagen?



Like to be one of 7,000 in the Campus Bookstore on the 1st day of classes next semester?



IF NOT, BUY YOUR BOOKS EARLY. FALL SEMESTER BOOKS ON SALE NOW IN THE CAMPUS BOOKSTORE.